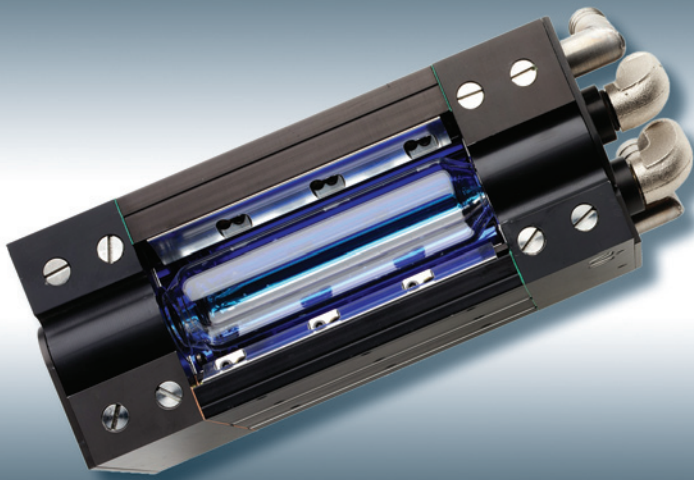


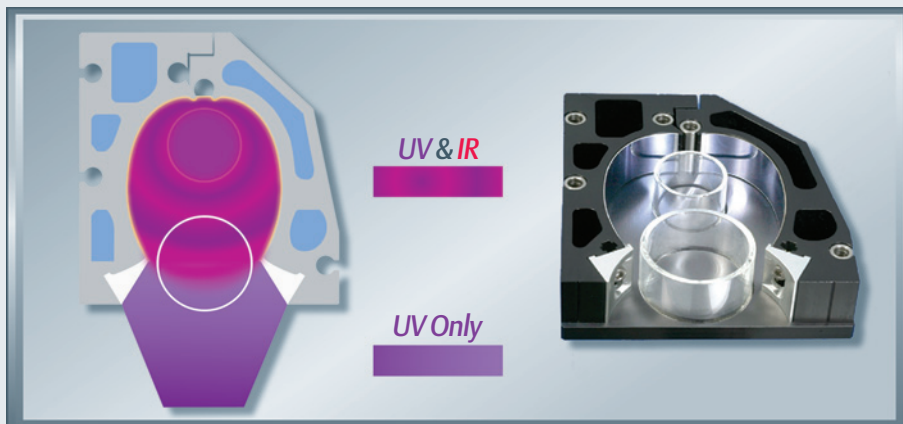
More Intense UV with less heat



DropCure™ Lamp Head

The DropCure™ system provides an intense, focused band of UV energy to the substrate. The innovative design incorporates several technologies to deliver high intensity UV without the high pressure airflows or infrared energy that is detrimental to many substrates.

The DropCure™ lamp head is totally water cooled, with only a small amount of compressed airflow cooling the lamp. The lamp head does not require large volumes of air movement for cooling. The DropCure™ IR filtering water tube removes most of the harmful infrared energy that is detrimental to heat-sensitive substrates without reducing long wave UV.



DropCure™ Section

Advantages

Practical

- Narrow band of intense UV
- No direct / reflected IR radiation
- Quiet operation
- Quick lamp change

Economical

- No Air extraction required
- Standby level of 5% possible

Ecological

- No ozone outside of lamp head
- No effect on the ambient air temperature



More Intense UV with Less Heat

Features

- Narrow band of intense UV enabling deep cure
- Up to 240 watt/cm (600 watt/in)
- Dichroic reflectors reflect useful UV energy while absorbing harmful infrared energy
- Secondary external reflectors refocus UV energy to maximize intensity on the substrate. This patented secondary reflector design provides a strong band of UV energy below the lamp head
- Water cooled quartz tube stays cool with water circulating at a high velocity within
- Shutter-less design provides the dependability of no moving parts (an optional pneumatic or electric fast-acting shutter is available)
- With the use of the Baldwin UV digital power supply, the output power can be reduced to the point that heat is no longer a factor
- No ozone is produced outside the lamp head, eliminating the need for costly air extraction systems saving on installation / ducting costs and operation
- Elimination of exhaust cooling air keeps the lamps and reflectors cleaner for reduced maintenance, longer service life and optimal UV performance. This also eliminates the need for noisy cooling blowers and the possibility of contamination to the end product
- 5% standby power available when driven by the Baldwin UV solid-state digital power supply
- Available in arc lengths from 100mm (3.9 in) to 1200mm (47 in).

Service solutions

- Cooling options i.e. Water / Water or Air Blast Cooler
- End fittings left or right hand side
- End fittings straight or 90° elbow fitting

Options

- Digital Power Supply
- Additive lamps
- Shutter



DropCure™ – easy access for lamp change

BALDWIN – complete printing periphery in one system

Contact us for:

- Professional advice and support
- Further product information
- Return on investment calculation (ROI)

NP NP@baldwintech.com

SF SF@baldwintech.com

CW CW@baldwintech.com

FP FP@baldwintech.com

DP DP@baldwintech.com

BALDWIN®